

# Your cab design

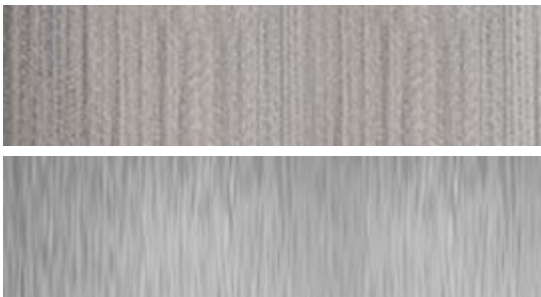


This illustration is for representation purposes only. Actual finish colors and cab designs may vary. Contact your sales representative to obtain finish samples and actual cab designs.

Our cabs are third-party validated to be low-emitting, helping your passengers breathe easy. They include energy-efficient LED lighting.

If you have questions, contact your sales representative at (844) 427-5461.

## Your color palette



# Your cab specification

## Cab design

---

Cab type	Applied panel: Mix beauty and practicality with this decorative and durable cab. The panel design is constructed with a high-quality steel shell and vertical raised panels made with a core of urea formaldehyde-free wood.
----------	------------------------------------------------------------------------------------------------------------------------------------------------------------------------------------------------------------------------------

---

## Walls


---

Panel finish	Sarum Twill - 8827	
Reveal finish	Brushed Stainless Steel - #4	

---

## Handrails

---

Handrail types	1.5" Cylindrical	
Handrail finish	Brushed Stainless Steel - #4	
Handrail quantity	3	

---

## Ceilings



---

Ceiling types	Downlight with LED	
Ceiling panel finish	Brushed Stainless Steel - #4	

---

## Doors and fronts

---

Door types	Left opening	
Cab front finish	Brushed Stainless Steel - #4	
Cab door finish	Brushed Stainless Steel - #4	

---

## Cab fixtures

---

Fixture types	Traditional
---------------	-------------

---

# Your cab specification

Push button illumination      Red

---

Swing types      Column

---